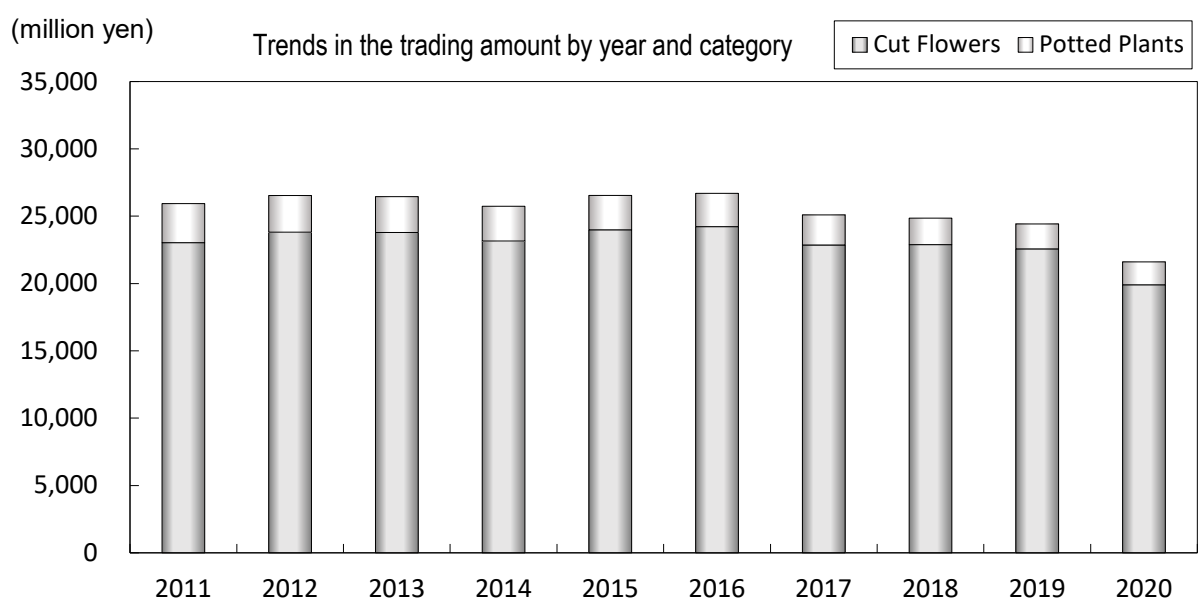
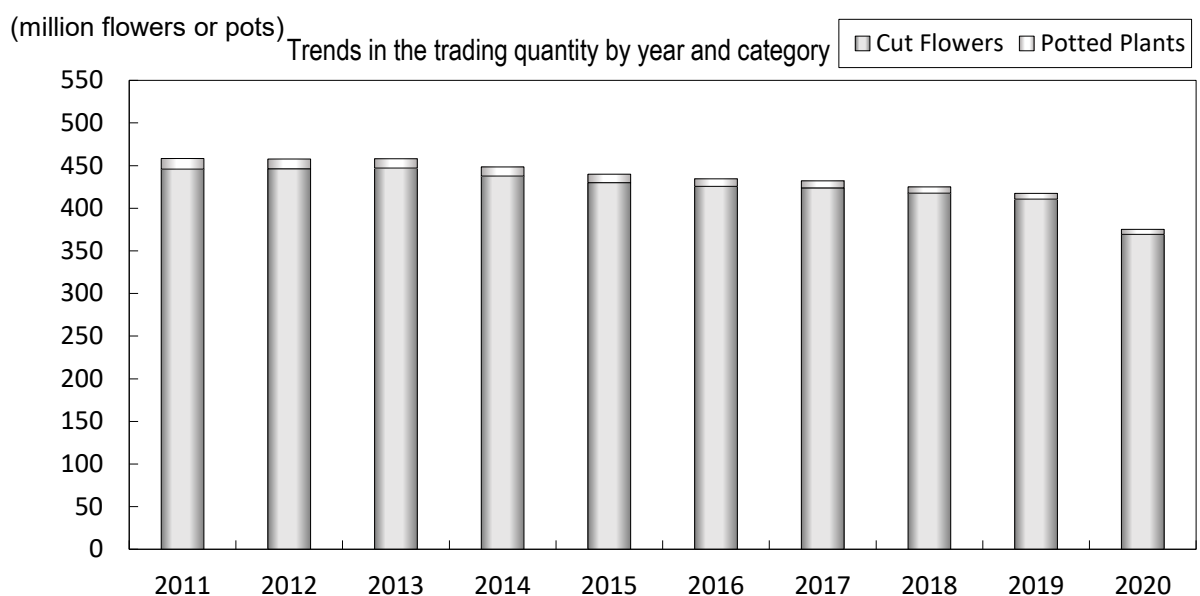


11. Trends in the trading volume in the past ten years by year and category

(Units: flower or pot for quantity, yen for amount)

Year	Cut Flowers		Potted Plants		Total	
	Quantity	Amount	Quantity	Amount	Quantity	Amount
2011	445,890,751	23,036,193,563	12,434,182	2,899,299,212	458,324,933	25,935,492,775
2012	446,324,311	23,814,706,225	11,416,117	2,721,202,832	457,740,428	26,535,909,057
2013	447,132,228	23,791,058,255	10,908,656	2,661,238,115	458,040,884	26,452,296,370
2014	437,739,386	23,158,226,919	10,699,149	2,580,122,074	448,438,535	25,738,348,993
2015	430,034,003	23,990,833,367	9,898,628	2,551,854,596	439,932,631	26,542,687,963
2016	425,665,721	24,225,796,203	8,819,837	2,471,855,741	434,485,558	26,697,651,944
2017	423,891,700	22,862,694,063	8,229,946	2,233,696,699	432,121,646	25,096,390,762
2018	417,684,450	22,890,359,463	7,345,746	1,966,042,047	425,030,196	24,856,401,510
2019	410,702,057	22,573,661,178	6,734,132	1,850,435,844	417,436,189	24,424,097,022
2020	369,368,633	19,907,450,753	5,857,592	1,699,206,988	375,226,225	21,606,657,741



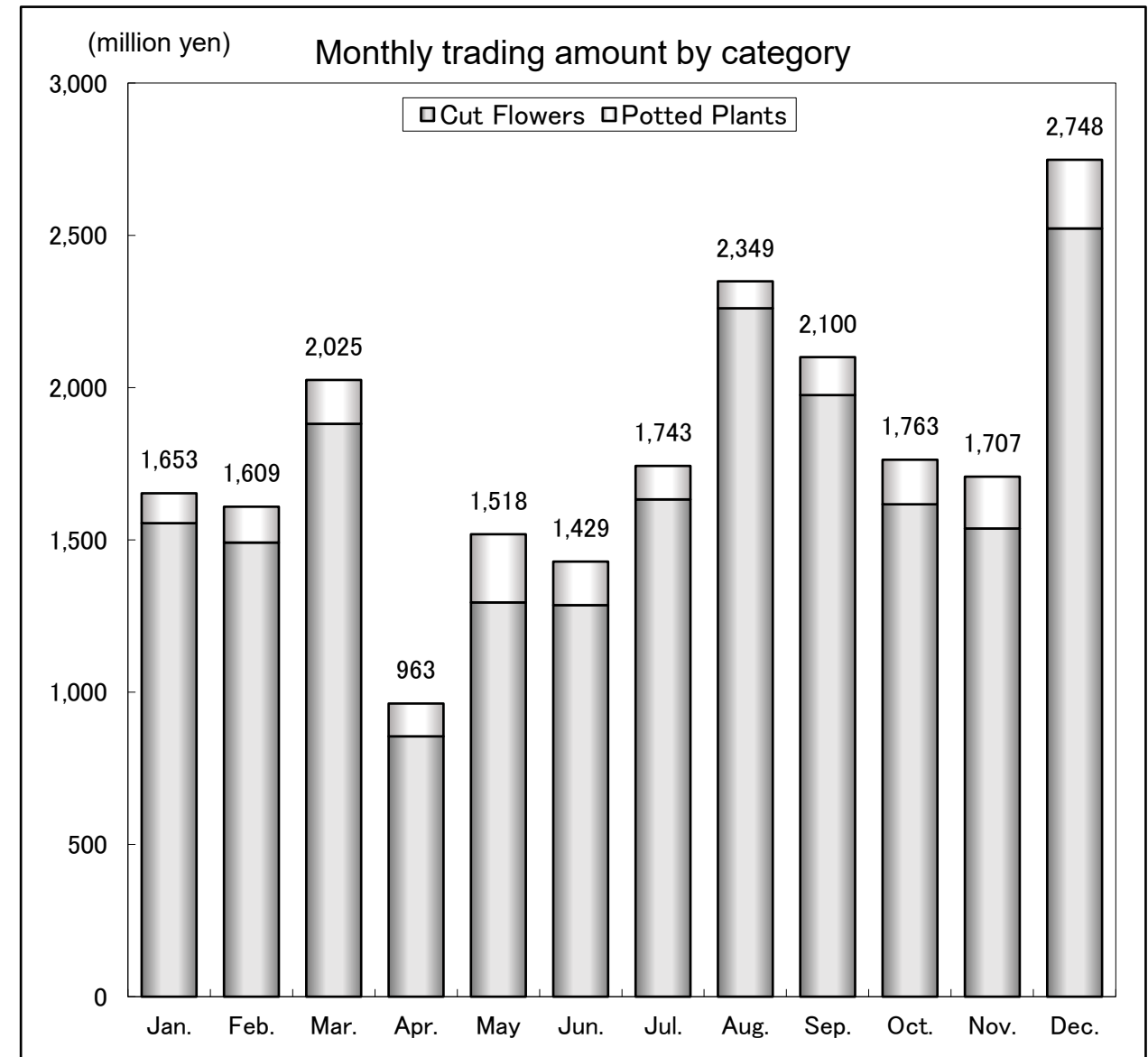
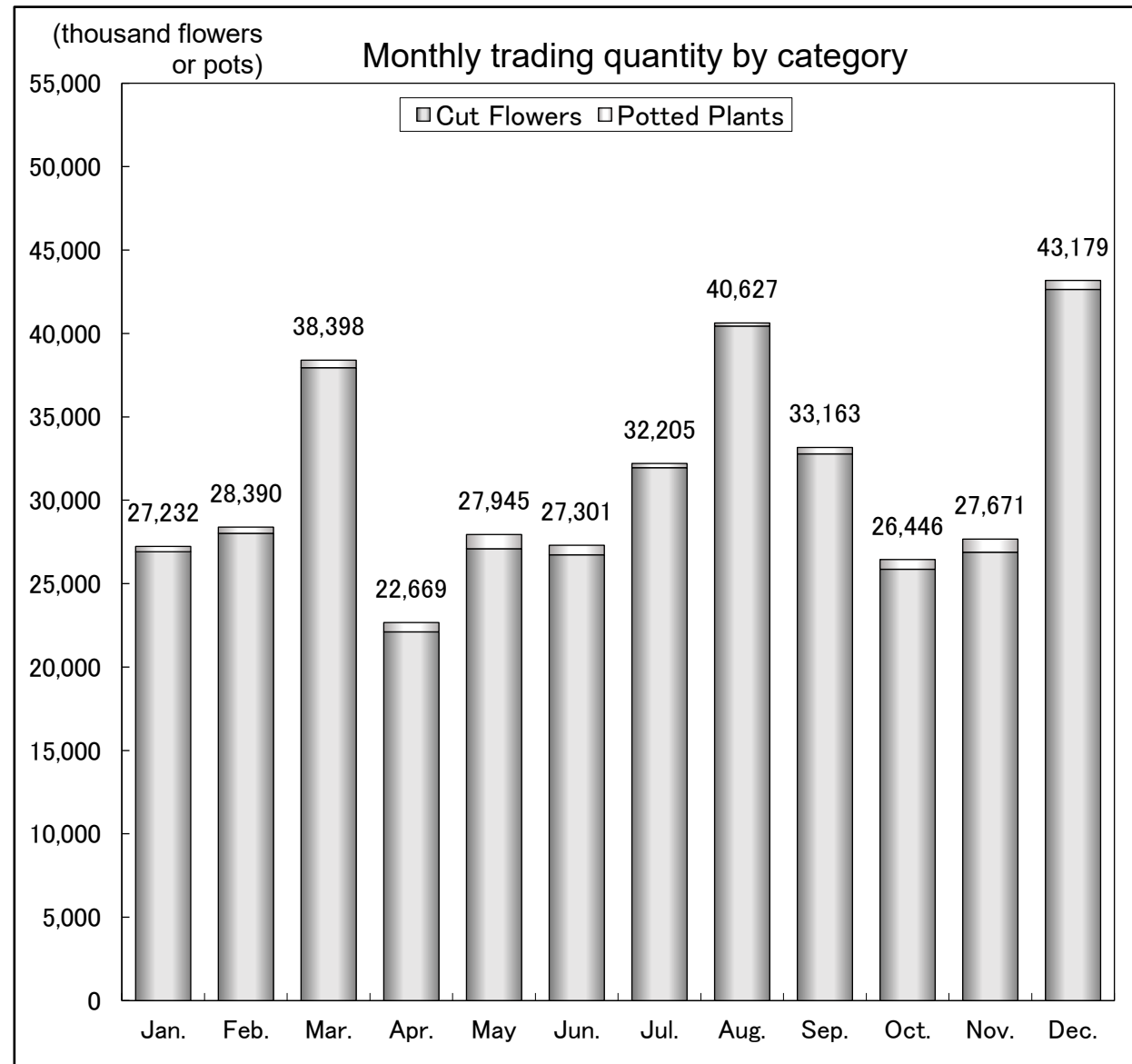
# Reference data

1. Monthly trading volume by category

(Units: flower or pot for quantity, yen for amount)

Category	Month	Jan.	Feb.	Mar.	Apr.	May	Jun.	Jul.	Aug.	Sep.	Oct.	Nov.	Dec.	Total
	Cut Flowers	Quantity	26,912,555	28,017,617	37,945,016	22,108,565	27,093,674	26,728,332	31,952,370	40,443,459	32,778,519	25,863,347	26,886,111	42,639,068
Amount		1,554,827,883	1,491,142,848	1,881,039,406	854,885,596	1,294,533,324	1,285,672,788	1,632,902,459	2,260,468,197	1,975,344,235	1,616,804,734	1,537,351,025	2,522,478,258	19,907,450,753
Unit Price		58	53	50	39	48	48	51	56	60	63	57	59	54
Potted Plants	Quantity	319,407	372,139	452,667	560,059	851,455	573,103	252,982	183,886	384,714	582,472	785,012	539,696	5,857,592
	Amount	98,136,517	117,661,996	143,947,832	107,714,258	223,894,280	142,968,098	109,869,056	88,458,378	124,673,326	146,272,054	170,131,867	225,479,326	1,699,206,988
	Unit Price	307	316	318	192	263	249	434	481	324	251	217	418	290
Total	Quantity	27,231,962	28,389,756	38,397,683	22,668,624	27,945,129	27,301,435	32,205,352	40,627,345	33,163,233	26,445,819	27,671,123	43,178,764	375,226,225
	Share	7.3%	7.6%	10.2%	6.0%	7.4%	7.3%	8.6%	10.8%	8.8%	7.0%	7.4%	11.5%	100.0%
	Amount	1,652,964,400	1,608,804,844	2,024,987,238	962,599,854	1,518,427,604	1,428,640,886	1,742,771,515	2,348,926,575	2,100,017,561	1,763,076,788	1,707,482,892	2,747,957,584	21,606,657,741
	Share	7.7%	7.4%	9.4%	4.5%	7.0%	6.6%	8.1%	10.9%	9.7%	8.2%	7.9%	12.7%	100.0%

As for the shares, these figures have been rounded off to the first decimal and may not add up to 100.











3. Monthly trading volume by item (1) Cut flower

(Units: flower for quantity, yen for amount)

Item (scientific name)	Month	Jan.	Feb.	Mar.	Apr.	May	Jun.	Jul.	Aug.	Sep.	Oct.	Nov.	Dec.	Total	Share
		Chrysanthemum (Chrysanthemum grandiflorum)	Quantity	3,712,280	3,259,520	5,002,450	2,858,215	3,161,380	3,830,889	4,493,225	6,293,335	4,441,717	3,574,107	3,407,155	5,596,949
	Amount	206,653,985	142,241,475	230,039,912	84,529,905	129,878,269	159,095,340	183,966,542	310,146,600	278,656,603	175,063,205	173,498,557	313,474,536	2,387,244,929	11.99%
	Unit Price	56	44	46	30	41	42	41	49	63	49	51	56	48	
Chrysanthemum Spray (Chrysanthemum grandiflorum)	Quantity	2,122,990	2,064,570	3,077,049	1,738,718	1,885,370	1,835,295	2,064,607	2,970,700	2,377,338	1,974,363	2,019,803	2,893,683	27,024,486	7.32%
	Amount	83,723,105	77,449,954	114,503,732	52,201,115	77,853,147	97,759,177	111,314,105	178,352,354	157,571,159	117,308,297	84,549,347	143,501,988	1,296,087,480	6.51%
	Unit Price	39	38	37	30	41	53	54	60	66	59	42	50	48	
Chrysanthemum Spray Small Type (Chrysanthemum grandiflorum)	Quantity	2,311,325	2,354,830	4,855,865	2,072,265	2,790,060	2,699,105	4,948,275	5,783,268	4,094,239	2,656,527	2,646,435	4,976,600	42,188,794	11.42%
	Amount	58,567,036	57,642,115	113,392,200	43,293,311	62,810,573	81,933,295	143,992,782	195,290,504	163,886,696	91,834,506	62,512,551	126,539,715	1,201,695,284	6.04%
	Unit Price	25	24	23	21	23	30	29	34	40	35	24	25	28	
Other Chrysanthemum (Chrysanthemum grandiflorum)	Quantity	250,850	211,708	284,405	240,944	193,945	215,900	245,808	310,584	311,216	235,595	290,046	749,156	3,540,157	0.96%
	Amount	18,676,340	14,134,710	18,114,869	10,521,142	10,262,150	12,528,675	16,526,360	25,580,093	27,889,279	20,186,685	22,490,735	75,126,234	272,037,272	1.37%
	Unit Price	74	67	64	44	53	58	67	82	90	86	78	100	77	
Rose (Rosa)	Quantity	1,192,380	1,113,612	1,411,693	876,157	1,110,341	1,179,912	1,115,841	955,830	1,169,416	1,332,488	1,333,232	1,090,193	13,881,095	3.76%
	Amount	92,826,660	95,705,629	112,345,037	46,710,551	74,497,019	55,394,902	57,562,513	45,388,741	85,260,990	97,676,442	98,004,890	99,432,077	960,805,451	4.83%
	Unit Price	78	86	80	53	67	47	52	47	73	73	74	91	69	
Spray rose (Rosa)	Quantity	343,345	306,021	420,889	345,902	449,087	443,601	402,720	367,034	334,803	352,386	391,727	331,995	4,489,510	1.22%
	Amount	29,519,219	28,940,592	40,156,332	18,797,717	32,237,627	22,578,079	22,494,401	17,715,459	29,488,304	32,750,458	34,415,857	30,396,376	339,490,421	1.71%
	Unit Price	86	95	95	54	72	51	56	48	88	93	88	92	76	
Carnation (Dianthus caryophyllus)	Quantity	1,746,747	1,716,434	2,588,015	1,786,545	2,769,818	2,072,854	2,130,429	2,755,480	2,348,926	2,111,703	2,088,499	2,444,424	26,559,874	7.19%
	Amount	68,851,677	67,209,868	93,651,703	49,965,828	128,980,293	67,569,923	71,286,363	89,304,119	88,034,388	85,488,016	71,416,523	86,944,887	968,703,588	4.87%
	Unit Price	39	39	36	28	47	33	33	32	37	40	34	36	36	
Spray carnation (Dianthus caryophyllus)	Quantity	840,607	859,452	1,460,853	1,043,827	1,455,211	1,185,949	1,191,593	1,590,500	1,448,502	1,097,454	1,097,967	1,363,895	14,635,810	3.96%
	Amount	38,557,790	37,721,220	65,190,605	34,139,236	72,962,581	49,442,220	55,742,520	72,858,124	61,652,745	50,391,555	39,437,023	54,502,738	632,598,357	3.18%
	Unit Price	46	44	45	33	50	42	47	46	43	46	36	40	43	
Oriental HB lily (Lilium Hybrid)	Quantity	434,195	465,431	566,914	422,180	548,555	688,759	684,562	661,778	566,132	484,124	501,437	619,547	6,643,614	1.80%
	Amount	112,233,548	88,956,873	105,057,644	56,600,892	72,734,779	84,207,704	113,236,306	141,039,777	111,352,684	108,365,757	110,720,350	147,638,417	1,252,144,731	6.29%
	Unit Price	258	191	185	134	133	122	165	213	197	224	221	238	188	
Easter lily (Lilium logiflorum)	Quantity	89,140	88,358	118,792	57,706	79,361	96,414	168,077	266,092	143,765	81,265	78,655	169,480	1,437,105	0.39%
	Amount	9,846,586	7,715,416	12,402,675	4,966,320	5,103,450	6,892,855	12,969,780	24,826,787	16,525,825	9,416,110	8,280,110	20,893,410	139,839,324	0.70%
	Unit Price	110	87	104	86	64	71	77	93	115	116	105	123	97	
Thunbeng lily (Lilium maculatum)	Quantity	90,523	106,865	184,672	135,014	149,575	181,225	143,790	153,250	143,080	121,250	110,417	159,982	1,679,643	0.45%
	Amount	8,293,881	8,174,730	13,488,615	6,776,738	6,709,510	9,062,991	9,743,110	13,271,890	11,018,950	10,107,360	8,947,765	14,223,582	119,819,122	0.60%
	Unit Price	92	76	73	50	45	50	68	87	77	83	81	89	71	
Other lilies	Quantity	435	1,018	9,299	9,306	9,805	14,848	4,352	0	30	1,316	470	775	51,654	0.01%
	Amount	87,620	154,400	694,051	429,750	635,840	1,519,310	511,650	0	3,000	143,455	40,445	176,585	4,396,106	0.02%
	Unit Price	201	152	75	46	65	102	118	0	100	109	86	228	85	
Alstroemeria	Quantity	547,220	570,080	703,686	603,890	614,695	488,900	356,220	347,970	325,095	296,675	388,213	508,973	5,751,617	1.56%
	Amount	44,493,735	36,453,355	52,272,535	27,064,838	33,354,955	28,599,065	35,787,870	32,302,040	30,992,820	33,179,855	36,303,546	40,682,845	431,487,459	2.17%
	Unit Price	81	64	74	45	54	58	100	93	95	112	94	80	75	
Gypsophila	Quantity	448,382	507,479	722,274	605,631	822,078	516,142	326,584	280,040	250,310	240,461	457,994	501,826	5,679,201	1.54%
	Amount	34,583,738	33,427,963	49,266,604	23,129,530	37,193,295	26,180,170	26,425,610	31,784,990	28,601,810	30,220,460	35,755,933	36,036,021	392,606,124	1.97%
	Unit Price	77	66	68	38	45	51	81	114	114	126	78	72	69	
Lisianthus (Eustoma)	Quantity	384,437	420,041	494,514	376,695	443,276	618,957	601,407	615,744	712,831	528,479	506,995	517,586	6,220,962	1.68%
	Amount	69,415,975	70,521,122	74,291,989	50,388,797	66,975,349	66,102,829	88,526,160	93,149,643	93,036,987	84,581,023	91,980,335	83,453,860	932,424,069	4.68%
	Unit Price	181	168	150	134	151	107	147	151	131	160	181	161	150	
Statice (Limonium sinuatum)	Quantity	836,112	909,885	1,679,840	1,370,399	1,441,857	1,310,573	1,566,102	1,888,801	1,347,272	901,715	1,140,739	1,379,005	15,772,300	4.27%
	Amount	43,273,398	43,358,909	71,522,916	19,196,636	40,502,911	66,580,020	77,426,248	97,749,805	75,474,372	57,162,604	47,966,343	65,804,390	706,018,552	3.55%
	Unit Price	52	48	43	14	28	51	49	52	56	63	42	48	45	
Gentian	Quantity	0	56	0	0	4,870	137,590	1,616,794	3,798,520	2,720,699	1,020,540	94,540	0	9,393,609	2.54%
	Amount	0	6,720	0	0	299,200	8,884,900	60,481,470	181,082,450	133,346,815	50,412,125	5,583,148	0	440,096,828	2.21%
	Unit Price	0	120	0	0	61	65	37	48	49	49	59	0	47	

## 3. Monthly trading volume by item (1) Cut flower

(Units: flower for quantity, yen for amount)

Item (scientific name)	Month	Jan.	Feb.	Mar.	Apr.	May	Jun.	Jul.	Aug.	Sep.	Oct.	Nov.	Dec.	Total	Share
	Stock ( <i>Malcolmia maritima</i> )	Quantity	695,584	701,203	704,265	147,830	90,550	17,590	0	0	5,130	88,825	582,045	652,135	3,685,157
	Amount	51,564,201	41,964,455	39,966,278	8,955,856	5,100,830	1,051,900	0	0	389,100	8,980,580	40,845,402	46,139,005	244,957,607	1.23%
	Unit Price	74	60	57	61	56	60	0	0	76	101	70	71	66	
Gerbera	Quantity	897,408	965,685	1,343,521	1,012,142	1,134,264	844,884	606,983	518,588	681,844	623,863	903,707	846,395	10,379,284	2.81%
	Amount	27,757,002	28,456,224	51,141,208	19,687,580	26,744,352	14,754,834	16,013,116	14,621,373	21,052,228	26,687,821	30,021,240	26,061,090	302,998,068	1.52%
	Unit Price	31	29	38	19	24	17	26	28	31	43	33	31	29	
Peony ( <i>Paeonia lactiflora</i> )	Quantity	0	0	16,140	116,030	564,627	308,205	100	0	0	210	700	215	1,006,227	0.27%
	Amount	0	0	1,552,250	8,392,040	41,144,021	17,345,175	6,000	0	0	61,650	165,170	53,250	68,719,556	0.35%
	Unit Price	0	0	96	72	73	56	60	0	0	294	236	248	68	
Calla lily ( <i>Zantedeschia aethiopica</i> )	Quantity	65,906	94,662	132,483	116,409	78,462	67,766	63,230	25,505	39,774	35,949	35,430	40,465	796,041	0.22%
	Amount	5,372,646	6,689,309	7,787,893	4,784,890	4,372,380	4,575,654	4,780,752	2,288,525	4,198,655	4,410,187	5,339,395	4,679,393	59,279,679	0.30%
	Unit Price	82	71	59	41	56	68	76	90	106	123	151	116	74	
Marguerite ( <i>Argyranthemum frutescens</i> )	Quantity	41,610	65,280	104,580	42,150	19,950	100	0	0	0	3,150	22,190	38,710	337,720	0.09%
	Amount	2,244,520	3,065,970	4,773,730	1,196,912	466,260	4,000	0	0	0	185,900	1,217,220	1,979,490	15,134,002	0.08%
	Unit Price	54	47	46	28	23	40	0	0	0	59	55	51	45	
Sweet pea ( <i>Lathyrus odoratus</i> )	Quantity	1,384,703	1,674,059	1,623,571	251,148	24,540	3,345	1,435	80	900	7,780	559,688	860,318	6,391,567	1.73%
	Amount	49,269,939	56,525,581	48,907,370	6,029,420	1,214,990	272,290	145,940	19,000	151,740	368,550	9,945,716	24,609,422	197,459,958	0.99%
	Unit Price	36	34	30	24	50	81	102	238	169	47	18	29	31	
Aster	Quantity	39,860	23,420	46,720	92,276	116,088	108,230	135,503	252,092	60,965	65,070	48,790	30,250	1,019,264	0.28%
	Amount	2,348,360	1,441,340	3,248,140	4,106,255	6,399,355	6,255,570	8,358,205	15,943,894	4,394,405	5,312,610	3,886,100	2,323,480	64,017,714	0.32%
	Unit Price	59	62	70	44	55	58	62	63	72	82	80	77	63	
Snapdragon ( <i>Antirrhinum majus</i> )	Quantity	161,909	150,615	241,634	205,005	86,635	30,760	15,410	11,700	13,610	89,665	126,943	112,759	1,246,645	0.34%
	Amount	9,488,897	8,193,243	11,975,560	6,856,354	3,273,892	1,646,350	736,700	524,580	729,984	5,269,210	6,810,569	6,664,470	62,169,809	0.31%
	Unit Price	59	54	50	33	38	54	48	45	54	59	54	59	50	
Dianthus superbus var. longicalycinus	Quantity	36,333	36,416	40,502	58,480	112,072	122,843	32,494	21,995	5,366	4,640	8,234	14,424	493,799	0.13%
	Amount	1,123,752	963,813	1,067,765	890,815	2,233,044	2,890,245	1,163,720	868,720	293,720	319,480	446,840	683,470	12,945,384	0.07%
	Unit Price	31	26	26	15	20	24	36	39	55	69	54	47	26	
Dahlia	Quantity	84,570	95,915	114,705	76,285	59,213	49,929	102,906	61,847	80,037	138,974	143,077	82,561	1,090,019	0.30%
	Amount	12,748,326	13,033,065	13,205,511	5,325,214	4,857,011	3,524,532	7,265,828	4,916,515	10,332,975	17,969,608	19,489,247	12,577,365	125,245,197	0.63%
	Unit Price	151	136	115	70	82	71	71	79	129	129	136	152	115	
Delphinium	Quantity	127,327	147,435	198,408	221,883	282,504	278,415	227,672	186,012	175,215	165,615	139,556	99,921	2,249,963	0.61%
	Amount	15,601,860	17,093,690	20,828,208	12,851,444	15,901,012	18,119,222	21,699,275	22,520,011	17,376,390	21,068,083	18,659,930	14,656,150	216,375,275	1.09%
	Unit Price	123	116	105	58	56	65	95	121	99	127	134	147	96	
Cosmos	Quantity	13,580	19,870	11,270	1,950	1,450	850	2,450	15,370	127,455	171,605	49,025	10,300	425,175	0.12%
	Amount	482,470	680,141	265,245	12,740	26,550	28,500	80,610	631,790	5,415,375	6,558,585	1,449,779	281,596	15,913,381	0.08%
	Unit Price	36	34	24	7	18	34	33	41	42	38	30	27	37	
Celosia ( <i>Celosia argentea</i> )	Quantity	829	300	1,563	2,880	37,120	190,215	436,224	1,244,909	727,292	262,498	109,737	30,835	3,044,402	0.82%
	Amount	71,340	30,450	110,374	213,240	1,856,025	6,764,887	15,484,292	44,147,466	32,701,974	16,417,812	5,947,718	1,483,790	125,229,368	0.63%
	Unit Price	86	102	71	74	50	36	35	35	45	63	54	48	41	
Gloriosa	Quantity	36,140	43,500	65,874	41,410	63,040	48,920	50,710	49,940	49,350	46,420	58,428	57,530	611,262	0.17%
	Amount	7,036,930	6,397,140	8,779,080	4,150,060	4,840,320	4,198,000	5,782,525	5,130,210	6,299,170	7,120,970	7,563,940	9,196,470	76,494,815	0.38%
	Unit Price	195	147	133	100	77	86	114	103	128	153	129	160	125	
Solidaster luteus	Quantity	138,940	152,270	243,640	182,330	197,690	309,250	322,505	329,290	253,110	235,730	236,280	212,590	2,813,625	0.76%
	Amount	6,093,680	6,560,710	7,413,400	4,068,350	4,469,209	6,462,589	9,159,245	11,548,730	9,689,435	9,805,720	7,267,320	7,117,190	89,655,578	0.45%
	Unit Price	44	43	30	22	23	21	28	35	38	42	31	33	32	
Lace flower ( <i>Ammi majus</i> )	Quantity	68,308	83,002	113,291	77,109	136,914	41,965	20,183	12,575	17,656	20,361	34,609	41,469	667,442	0.18%
	Amount	3,431,540	4,213,230	5,006,360	2,559,983	5,225,670	1,886,960	1,018,478	809,100	1,101,645	1,622,740	2,645,270	2,509,493	32,030,469	0.16%
	Unit Price	50	51	44	33	38	45	50	64	62	80	76	61	48	
Tulip ( <i>Tulipa</i> )	Quantity	639,867	741,855	896,440	93,592	0	0	0	0	0	9,790	44,630	315,790	2,741,964	0.74%
	Amount	33,143,970	33,497,660	40,702,240	4,137,260	0	0	0	0	0	875,250	3,530,540	18,990,530	134,877,450	0.68%
	Unit Price	52	45	45	44	0	0	0	0	0	89	79	60	49	

## 3. Monthly trading volume by item (1) Cut flower

(Units: flower for quantity, yen for amount)

Item (scientific name)	Month	Jan.	Feb.	Mar.	Apr.	May	Jun.	Jul.	Aug.	Sep.	Oct.	Nov.	Dec.	Total	Share
		Quantity	231,615	273,995	325,400	45,530	400	0	0	0	0	1,750	24,235	181,350	1,084,275
Freesia	Amount	9,369,500	9,352,614	10,679,626	1,677,428	23,000	0	0	0	0	84,450	1,056,915	7,880,655	40,124,188	0.20%
	Unit Price	40	34	33	37	58	0	0	0	0	48	44	43	37	
	Quantity	98,360	154,770	155,120	12,610	2,760	0	0	0	0	2,100	84,710	237,740	748,170	0.20%
Iris	Amount	4,207,435	5,488,790	5,502,180	447,028	81,600	0	0	0	0	130,800	3,886,220	10,393,005	30,137,058	0.15%
	Unit Price	43	35	35	35	30	0	0	0	0	62	46	44	40	
	Quantity	171,913	25,539	17,980	340	0	0	0	0	0	0	31,697	219,670	467,139	0.13%
Narcissus	Amount	5,413,197	891,540	309,135	9,500	0	0	0	0	0	0	1,925,616	8,340,005	16,888,993	0.08%
	Unit Price	31	35	17	28	0	0	0	0	0	0	61	38	36	
	Quantity	187,639	140,620	187,630	108,570	143,254	181,980	250,516	274,960	233,101	103,514	163,146	145,067	2,119,997	0.57%
Gladiolus	Amount	9,608,143	7,917,450	8,972,360	6,050,042	7,342,840	10,236,520	15,512,328	15,977,990	13,756,500	8,731,660	10,951,215	9,809,660	124,866,708	0.63%
	Unit Price	51	56	48	56	51	56	62	58	59	84	67	68	59	
	Quantity	0	0	0	0	0	10,310	29,967	7,158	10,450	3,620	300	0	61,805	0.02%
Iris domestica	Amount	0	0	0	0	0	784,380	2,977,043	642,650	709,755	329,350	20,000	0	5,463,178	0.03%
	Unit Price	0	0	0	0	0	76	99	90	68	91	67	0	88	
	Quantity	19,703	21,930	87,930	169,245	407,490	658,648	654,761	560,227	290,794	142,854	74,315	28,515	3,116,412	0.84%
Sunflower (Helianthus annuus)	Amount	773,715	928,410	3,212,930	4,650,295	15,617,425	31,011,548	40,135,175	37,328,190	15,067,101	6,707,425	2,544,465	759,385	158,736,064	0.80%
	Unit Price	39	42	37	27	38	47	61	67	52	47	34	27	51	
	Quantity	400	0	0	147,253	223,604	6,970	0	0	0	0	0	0	378,227	0.10%
Calamus (Acorus calamus)	Amount	8,660	0	0	7,274,940	9,166,820	139,165	0	0	0	0	0	0	16,589,585	0.08%
	Unit Price	22	0	0	49	41	20	0	0	0	0	0	0	44	
	Quantity	1,795,300	2,387,259	2,193,993	1,210,179	1,644,958	1,728,620	1,569,935	1,575,704	1,878,993	1,367,746	1,251,325	2,454,375	21,058,387	5.70%
Other cut flowers	Amount	94,918,734	116,316,127	106,143,526	50,356,505	73,973,907	85,077,872	91,685,980	93,371,756	112,198,112	87,062,614	72,078,956	145,490,919	1,128,675,008	5.67%
	Unit Price	53	49	48	42	45	49	58	59	60	64	58	59	54	
	Quantity	75,055	55,930	51,964	34,203	26,913	21,451	19,753	25,498	23,949	20,734	40,707	135,952	532,109	0.14%
Cymbidium	Amount	20,231,422	14,423,485	14,180,458	7,616,683	8,177,529	10,775,376	10,876,228	19,049,577	13,957,410	14,134,485	19,406,554	57,232,397	210,061,604	1.06%
	Unit Price	270	258	273	223	304	502	551	747	583	682	477	421	395	
	Quantity	886,085	754,350	876,535	312,975	397,915	411,135	478,529	614,250	752,934	650,466	624,876	695,865	7,455,915	2.02%
Dendrobium phalaenopsis	Amount	21,123,247	16,615,660	26,697,540	14,554,905	17,735,809	17,964,035	22,281,242	31,144,082	32,387,902	28,398,567	24,100,217	36,517,375	289,520,581	1.45%
	Unit Price	24	22	30	47	45	44	47	51	43	44	39	52	39	
	Quantity	43,761	47,443	55,843	55,148	53,892	66,286	69,516	48,499	50,952	54,145	63,103	83,143	691,731	0.19%
Phalaenopsis aphrodite	Amount	32,866,405	31,248,350	24,389,425	12,389,466	13,727,195	13,149,901	17,107,286	21,995,893	21,672,052	28,461,724	35,847,933	32,471,584	285,327,214	1.43%
	Unit Price	751	659	437	225	255	198	246	454	425	526	568	391	412	
	Quantity	208,119	154,233	188,432	136,015	131,642	175,344	141,548	184,917	189,461	247,758	242,467	322,765	2,322,701	0.63%
Oncidium	Amount	24,516,705	21,409,585	21,638,214	12,591,730	14,449,975	10,842,512	17,067,573	20,478,205	17,063,519	19,793,925	19,523,342	23,277,075	222,652,360	1.12%
	Unit Price	118	139	115	93	110	62	121	111	90	80	81	72	96	
	Quantity	86,311	83,246	88,583	51,778	54,121	67,641	79,135	75,084	69,469	78,835	81,310	86,953	902,466	0.24%
Other orchid	Amount	7,269,207	6,702,741	6,291,932	3,380,813	4,086,820	6,172,399	7,336,322	7,661,400	6,699,046	8,016,178	7,901,510	7,583,550	79,101,918	0.40%
	Unit Price	84	81	71	65	76	91	93	102	96	102	97	87	88	
	Quantity	65,677	93,815	81,191	19,861	29,776	52,132	102,169	151,778	188,269	277,125	324,078	193,098	1,578,969	0.43%
Wildflower (※)	Amount	7,014,678	9,154,887	7,153,685	1,798,835	3,556,753	6,410,024	12,963,336	15,161,234	20,943,916	30,157,831	29,454,637	15,665,442	159,435,258	0.80%
	Unit Price	107	98	88	91	119	123	127	100	111	109	91	81	101	
	Quantity	0	50	0	0	0	50	31,771	523,265	3,430	1,520	580	0	560,666	0.15%
Lotus (Nelumbo nucifera)	Amount	0	2,500	0	0	0	6,000	2,811,620	61,516,980	143,860	85,200	26,400	0	64,592,560	0.32%
	Unit Price	0	50	0	0	0	120	88	118	42	56	46	0	115	
	Quantity	216	0	0	0	0	0	0	0	3,000	10,555	10,405	182,688	206,864	0.06%
Rohdea japonica	Amount	22,100	0	0	0	0	0	0	0	175,500	623,450	981,250	17,182,764	18,985,064	0.10%
	Unit Price	102	0	0	0	0	0	0	0	59	59	94	94	92	
	Quantity	16,928	22,911	24,346	12,731	17,036	31,596	59,966	48,643	40,049	37,845	65,255	42,898	420,204	0.11%
Traditional item	Amount	1,841,295	2,147,873	2,552,345	1,155,406	2,074,886	3,390,630	5,402,587	5,492,490	4,635,650	4,365,645	5,480,523	3,781,190	42,320,520	0.21%
	Unit Price	109	94	105	91	122	107	90	113	116	115	84	88	101	



## 3. Monthly trading volume by item (1) Cut flower

(Units: flower for quantity, yen for amount)

Item (scientific name)	Month	Jan.	Feb.	Mar.	Apr.	May	Jun.	Jul.	Aug.	Sep.	Oct.	Nov.	Dec.	Total	Share
		Quantity	Quantity	Quantity	Quantity	Quantity	Quantity	Quantity	Quantity	Quantity	Quantity	Quantity	Quantity	Quantity	Quantity
Sakaki	Quantity	189,727	216,956	256,275	235,804	267,268	343,631	334,475	414,199	384,268	301,355	254,397	354,169	3,552,524	0.96%
	Amount	12,320,093	18,892,760	17,818,295	12,384,733	17,065,597	18,491,302	19,880,355	22,278,522	24,223,725	18,302,054	13,714,270	24,828,805	220,200,511	1.11%
	Unit Price	65	87	70	53	64	54	59	54	63	61	54	70	62	
Pine (Pinus thunbergii)	Quantity	38,459	31,973	61,393	58,365	80,060	72,243	83,235	75,644	76,069	62,269	93,601	3,193,553	3,926,864	1.06%
	Amount	1,842,990	2,424,293	3,076,079	1,243,986	1,443,441	3,285,340	1,518,775	1,710,252	2,724,630	2,064,672	2,215,345	178,207,035	201,756,838	1.01%
	Unit Price	48	76	50	21	18	45	18	23	36	33	24	56	51	
Cherry, plum, peach (Prunus)	Quantity	71,977	578,044	144,617	19,616	815	30	0	0	16	9,678	11,714	1,326,118	2,162,625	0.59%
	Amount	10,613,093	35,685,786	29,566,500	5,001,204	5,860	45,000	0	0	3,800	1,562,020	1,593,858	29,352,615	113,429,736	0.57%
	Unit Price	147	62	204	255	7	1,500	0	0	238	161	136	22	52	
Eurya japonica	Quantity	370,545	395,835	735,071	406,436	498,642	612,168	629,362	760,190	815,329	479,136	423,785	825,639	6,952,138	1.88%
	Amount	16,130,280	23,423,725	28,373,125	11,625,306	21,274,460	19,475,420	22,762,277	40,237,860	28,253,896	14,199,023	18,426,298	32,286,517	276,468,187	1.39%
	Unit Price	44	59	39	29	43	32	36	53	35	30	43	39	40	
Japanese star anise (Illicium anisatum)	Quantity	20,416	17,525	57,247	17,051	28,132	36,925	57,757	73,312	65,590	31,152	32,761	67,343	505,211	0.14%
	Amount	4,325,925	4,123,470	11,086,660	3,947,541	7,460,810	8,999,910	11,458,430	14,825,650	13,490,895	6,478,970	6,688,385	13,061,025	105,947,671	0.53%
	Unit Price	212	235	194	232	265	244	198	202	206	208	204	194	210	
Japanese Umbrella pine (Sciadopitys verticillata)	Quantity	41,135	31,592	71,673	39,317	50,132	92,558	330,396	502,411	135,834	66,825	54,597	63,537	1,480,007	0.40%
	Amount	3,210,016	2,124,306	5,056,352	2,177,654	4,202,261	7,501,607	22,735,922	32,782,260	11,844,387	5,280,509	3,606,319	5,417,876	105,939,469	0.53%
	Unit Price	78	67	71	55	84	81	69	65	87	79	66	85	72	
Spirea (Spiraea Cantoniensis)	Quantity	84,530	131,440	166,750	36,788	4,570	480	0	0	0	0	470	0	425,028	0.12%
	Amount	10,726,630	12,806,430	10,279,119	2,420,412	165,658	32,710	0	0	0	0	41,420	0	36,472,379	0.18%
	Unit Price	127	97	62	66	36	68	0	0	0	0	88	0	86	
Sarcandra glabra	Quantity	1,620	0	0	0	0	0	0	0	0	55	357	894,548	896,580	0.24%
	Amount	109,774	0	0	0	0	0	0	0	0	7,000	55,490	154,556,155	154,728,419	0.78%
	Unit Price	68	0	0	0	0	0	0	0	0	127	155	173	173	
Other branches	Quantity	819,439	824,019	783,447	483,993	582,159	747,539	1,275,310	1,192,971	980,554	1,220,046	1,573,858	2,017,445	12,500,780	3.38%
	Amount	62,459,641	65,126,921	51,293,108	29,507,787	43,097,531	55,303,268	77,262,557	95,991,270	75,747,056	92,578,300	108,531,405	132,727,300	889,626,144	4.47%
	Unit Price	76	79	65	61	74	74	61	80	77	76	69	66	71	
Leather fan (Rumohra adiantiformis)	Quantity	414,555	412,358	487,322	347,245	339,605	313,225	306,815	324,375	297,805	337,360	350,315	462,757	4,393,737	1.19%
	Amount	10,225,015	9,075,080	10,554,480	8,006,005	9,163,805	6,506,090	8,928,915	10,319,430	8,428,210	9,238,205	9,207,885	10,602,225	110,255,345	0.55%
	Unit Price	25	22	22	23	27	21	29	32	28	27	26	23	25	
Polygonatum falcatum	Quantity	0	12,870	27,275	35,080	86,285	87,650	46,480	27,400	26,000	5,920	1,100	320	356,380	0.10%
	Amount	0	704,570	1,396,220	1,492,920	2,317,105	2,272,294	1,901,850	1,078,550	1,273,500	316,980	65,800	8,000	12,827,789	0.06%
	Unit Price	0	55	51	43	27	26	41	39	49	54	60	25	36	
Dypsis lutescens	Quantity	124,055	106,943	121,840	69,125	70,430	88,680	106,729	116,073	113,270	117,030	99,040	113,620	1,246,835	0.34%
	Amount	3,381,185	2,640,020	3,601,175	2,842,915	2,808,245	3,145,840	3,298,722	3,214,305	2,886,085	2,624,220	2,553,110	3,006,575	36,002,397	0.18%
	Unit Price	27	25	30	41	40	35	31	28	25	22	26	26	29	
Other leaves	Quantity	1,065,173	1,091,124	1,217,342	761,004	1,017,412	980,860	1,216,054	1,098,072	1,175,858	1,251,361	1,250,214	1,559,204	13,683,678	3.70%
	Amount	32,915,072	32,894,403	38,092,906	27,350,838	34,398,123	30,541,482	37,309,460	34,396,361	40,137,505	39,746,808	38,330,833	43,205,809	429,319,600	2.16%
	Unit Price	31	30	31	36	34	31	31	31	34	32	31	28	31	
Total	Quantity	26,912,555	28,017,617	37,945,016	22,108,565	27,093,674	26,728,332	31,952,370	40,443,459	32,778,519	25,863,347	26,886,111	42,639,068	369,368,633	100.00%
	Amount	1,554,827,883	1,491,142,848	1,881,039,406	854,885,596	1,294,533,324	1,285,672,788	1,632,902,459	2,260,468,197	1,975,344,235	1,616,804,734	1,537,351,025	2,522,478,258	19,907,450,753	100.00%
	Unit Price	58	53	50	39	48	48	51	56	60	63	57	59	54	

※ Leucospermum cordifolium / Leucadendron / Banksia / Chamelausium / Serruria florida / Anigozanthos / Actinotus helianthi / Protea madiensis / etc.

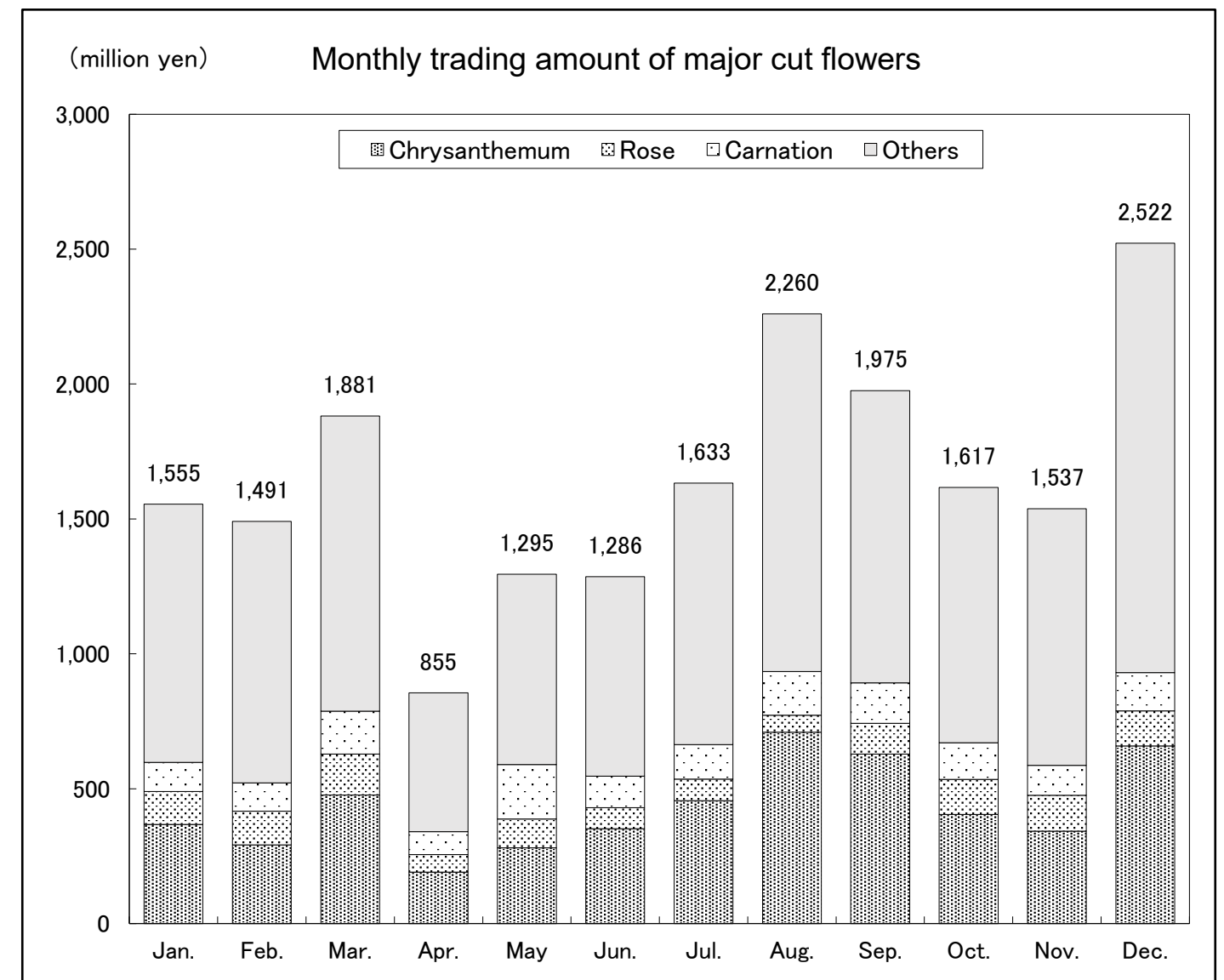
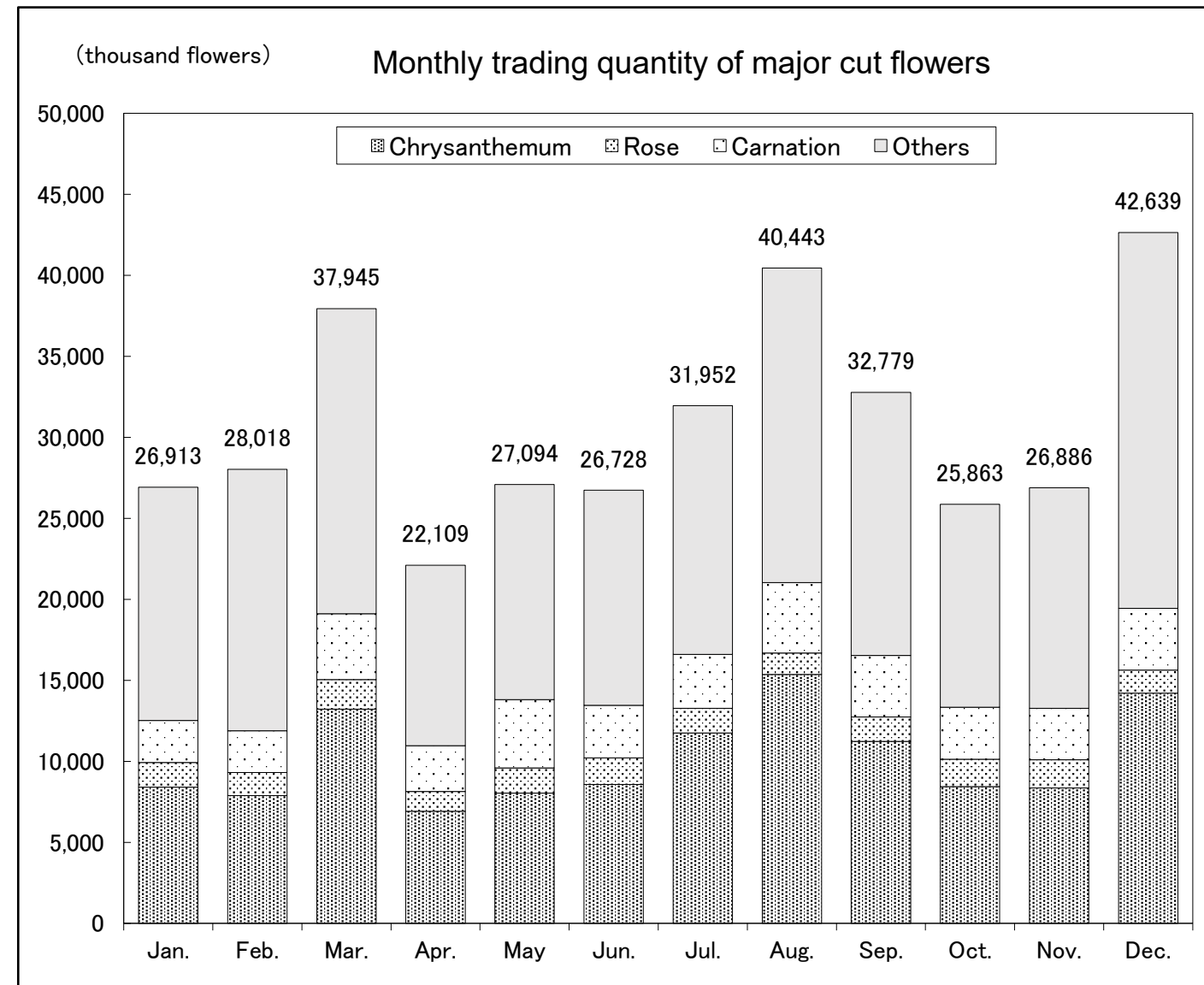
As for the shares, these figures have been rounded off to the second decimal and may not add up to 100.

3. Monthly trading volume by item (1) Cut flower ※ Monthly trading volume of major cut flowers

(Units: flower for quantity, yen for amount)

Item (scientific name)	Month	Jan.	Feb.	Mar.	Apr.	May	Jun.	Jul.	Aug.	Sep.	Oct.	Nov.	Dec.	Total	Share
	Chrysanthemum	Quantity	8,397,445	7,890,628	13,219,769	6,910,142	8,030,755	8,581,189	11,751,915	15,357,887	11,224,510	8,440,592	8,363,439	14,216,388	122,384,659
	Amount	367,620,466	291,468,254	476,050,713	190,545,473	280,804,139	351,316,487	455,799,789	709,369,551	628,003,737	404,392,693	343,051,190	658,642,473	5,157,064,965	25.91%
Rose	Quantity	1,535,725	1,419,633	1,832,582	1,222,059	1,559,428	1,623,513	1,518,561	1,322,864	1,504,219	1,684,874	1,724,959	1,422,188	18,370,605	4.97%
	Amount	122,345,879	124,646,221	152,501,369	65,508,268	106,734,646	77,972,981	80,056,914	63,104,200	114,749,294	130,426,900	132,420,747	129,828,453	1,300,295,872	6.53%
Carnation	Quantity	2,587,354	2,575,886	4,048,868	2,830,372	4,225,029	3,258,803	3,322,022	4,345,980	3,797,428	3,209,157	3,186,466	3,808,319	41,195,684	11.15%
	Amount	107,409,467	104,931,088	158,842,308	84,105,064	201,942,874	117,012,143	127,028,883	162,162,243	149,687,133	135,879,571	110,853,546	141,447,625	1,601,301,945	8.04%
Others	Quantity	14,392,031	16,131,470	18,843,797	11,145,992	13,278,462	13,264,827	15,359,872	19,416,728	16,252,362	12,528,724	13,611,247	23,192,173	187,417,685	50.74%
	Amount	957,452,071	970,097,285	1,093,645,016	514,726,791	705,051,665	739,371,177	970,016,873	1,325,832,203	1,082,904,071	946,105,570	951,025,542	1,592,559,707	11,848,787,971	59.52%

As for the shares, these figures have been rounded off to the second decimal and may not add up to 100.



## 3. Monthly trading volume by item (2) Potted Plants

(Units: pot for quantity, yen for amount)

Item	Month	Jan.	Feb.	Mar.	Apr.	May	Jun.	Jul.	Aug.	Sep.	Oct.	Nov.	Dec.	Total	Share
Other Potted orchids	Quantity	233	1,788	2,783	208	206	332	872	404	133	688	86	266	7,999	0.14%
	Amount	134,550	1,087,213	882,238	145,726	224,560	927,445	2,790,650	982,390	51,500	685,450	108,760	258,080	8,278,562	0.49%
	Unit Price	577	608	317	701	1,090	2,794	3,200	2,432	387	996	1,265	970	1,035	
Cattleya	Quantity	257	546	426	48	5	32	47	8	86	10	21	62	1,548	0.03%
	Amount	221,370	278,413	250,987	27,000	24,000	11,040	27,944	27,000	230,100	32,620	31,610	91,360	1,253,444	0.07%
	Unit Price	861	510	589	563	4,800	345	595	3,375	2,676	3,262	1,505	1,474	810	
Phalaenopsis aphrodite	Quantity	8,009	10,900	14,092	8,095	10,298	11,056	9,881	9,225	8,457	9,713	8,295	8,786	116,807	1.99%
	Amount	43,960,102	53,848,836	66,009,419	31,439,960	43,432,205	54,389,319	56,180,690	52,435,270	56,697,755	65,136,718	58,950,738	56,903,012	639,384,024	37.63%
	Unit Price	5,489	4,940	4,684	3,884	4,218	4,919	5,686	5,684	6,704	6,706	7,107	6,477	5,474	
Cymbidium	Quantity	2,740	1,529	428	11	2	0	0	0	83	428	2,882	15,082	23,185	0.40%
	Amount	6,598,085	2,725,120	582,320	40,640	6,000	0	0	0	164,580	1,086,670	10,118,120	47,872,080	69,193,615	4.07%
	Unit Price	2,408	1,782	1,361	3,695	3,000	0	0	0	1,983	2,539	3,511	3,174	2,984	
Dendrobium	Quantity	1,875	4,105	5,013	2,311	358	13	0	0	0	0	619	2,706	17,000	0.29%
	Amount	1,262,166	2,684,058	3,062,419	866,344	213,236	11,520	0	0	0	0	390,150	1,601,970	10,091,863	0.59%
	Unit Price	673	654	611	375	596	886	0	0	0	0	630	592	594	
Oncidium	Quantity	63	70	130	88	171	105	30	57	98	112	31	198	1,153	0.02%
	Amount	37,860	39,075	106,980	111,480	179,445	77,814	41,840	61,420	83,150	100,970	45,080	404,300	1,289,414	0.08%
	Unit Price	601	558	823	1,267	1,049	741	1,395	1,078	848	902	1,454	2,042	1,118	
Miltonia	Quantity	0	0	0	132	0	0	20	77	46	0	0	0	275	0.00%
	Amount	0	0	0	396,000	0	0	6,080	47,350	16,430	0	0	0	465,860	0.03%
	Unit Price	0	0	0	3,000	0	0	304	615	357	0	0	0	1,694	
Formidable	Quantity	0	0	0	393	1,865	390	23	23	12	0	0	0	2,706	0.05%
	Amount	0	0	0	422,390	1,216,765	670,770	24,225	36,920	7,540	0	0	0	2,378,610	0.14%
	Unit Price	0	0	0	1,075	652	1,720	1,053	1,605	628	0	0	0	879	
Vanda	Quantity	18	22	7	25	552	8	0	0	3	2	6	2	645	0.01%
	Amount	29,080	35,520	8,100	75,300	756,000	21,400	0	0	19,000	4,000	30,000	7,000	985,400	0.06%
	Unit Price	1,616	1,615	1,157	3,012	1,370	2,675	0	0	6,333	2,000	5,000	3,500	1,528	
Dendrobium phalaenopsis	Quantity	1	0	0	2	0	0	7	34	133	54	19	0	250	0.00%
	Amount	3,360	0	0	1,100	0	0	16,000	47,550	161,625	48,420	15,750	0	293,805	0.02%
	Unit Price	3,360	0	0	550	0	0	2,286	1,399	1,215	897	829	0	1,175	
Odontoglossum	Quantity	0	3	2	5	0	0	0	0	0	0	0	0	10	0.00%
	Amount	0	3,510	2,700	1,250	0	0	0	0	0	0	0	0	7,460	0.00%
	Unit Price	0	1,170	1,350	250	0	0	0	0	0	0	0	0	746	
Foliage	Quantity	20,534	27,276	38,591	39,035	64,628	66,683	50,122	32,337	41,439	41,534	32,255	19,608	474,042	8.09%
	Amount	9,812,444	12,952,357	18,695,789	16,420,548	25,613,022	30,856,276	28,325,837	16,345,435	22,276,960	18,814,021	13,030,561	9,604,712	222,747,962	13.11%
	Unit Price	478	475	484	421	396	463	565	505	538	453	404	490	470	
Reed rhaps (bamboo)	Quantity	42	58	87	44	324	154	84	35	35	95	48	86	1,092	0.02%
	Amount	109,230	123,550	162,050	76,000	528,240	289,500	162,190	105,760	87,380	196,620	141,510	128,992	2,111,022	0.12%
	Unit Price	2,601	2,130	1,863	1,727	1,630	1,880	1,931	3,022	2,497	2,070	2,948	1,500	1,933	
Succulent plants	Quantity	9,243	17,279	14,272	11,987	15,432	16,896	10,866	10,664	16,532	17,193	11,784	7,135	159,283	2.72%
	Amount	1,688,559	3,988,025	3,133,457	1,887,583	2,795,322	3,314,618	2,402,647	2,644,075	5,208,164	4,437,424	2,998,397	1,646,584	36,144,855	2.13%
	Unit Price	183	231	220	157	181	196	221	248	315	258	254	231	227	
Plants with fruit	Quantity	1,078	615	730	1,128	1,740	3,205	2,357	1,669	5,039	7,498	5,945	2,967	33,971	0.58%
	Amount	115,934	215,958	299,670	289,159	735,190	1,800,942	1,345,701	952,594	1,825,071	2,295,535	1,821,375	1,718,844	13,415,973	0.79%
	Unit Price	108	351	411	256	423	562	571	571	362	306	306	579	395	
Japanese style plants, Bonsai	Quantity	2,686	2,162	3,526	5,069	7,388	15,617	1,441	907	4,088	4,093	4,750	14,805	66,532	1.14%
	Amount	1,149,228	648,465	768,999	865,411	1,094,662	2,902,029	306,796	294,861	748,991	571,928	1,925,717	16,107,990	27,385,077	1.61%
	Unit Price	428	300	218	171	148	186	213	325	183	140	405	1,088	412	
Other flowering trees	Quantity	9,286	12,853	26,767	14,723	7,642	11,094	3,922	3,704	14,662	31,422	22,929	10,692	169,696	2.90%
	Amount	3,560,164	4,044,703	6,303,884	3,603,204	2,532,733	3,761,270	1,369,176	1,235,133	4,851,867	8,908,699	5,089,720	2,318,278	47,578,831	2.80%
	Unit Price	383	315	236	245	331	339	349	333	331	284	222	217	280	
Hydrangea	Quantity	60	1,234	8,767	20,670	54,740	17,830	1,311	20	343	0	0	0	104,975	1.79%
	Amount	22,800	944,165	5,227,728	14,374,343	47,132,708	9,285,559	648,804	10,960	358,262	0	0	0	78,005,329	4.59%
	Unit Price	380	765	596	695	861	521	495	548	1,044	0	0	0	743	

3. Monthly trading volume by item (2) Potted Plants

(Units: pot for quantity, yen for amount)

Item	Month	Jan.	Feb.	Mar.	Apr.	May	Jun.	Jul.	Aug.	Sep.	Oct.	Nov.	Dec.	Total	Share
Rhododendron	Quantity	76	125	1,442	214	0	0	0	0	0	245	95	15	2,212	0.04%
	Amount	11,600	98,184	485,313	101,255	0	0	0	0	0	83,426	36,100	9,000	824,878	0.05%
	Unit Price	153	785	337	473	0	0	0	0	0	341	380	600	373	
Hibiscus	Quantity	0	0	0	345	7,252	13,109	5,534	1,152	1	12	0	0	27,405	0.47%
	Amount	0	0	0	70,151	2,417,616	4,189,224	1,669,959	263,157	1,500	1,440	0	0	8,613,047	0.51%
	Unit Price	0	0	0	203	333	320	302	228	1,500	120	0	0	314	
Rose	Quantity	3,041	5,177	9,152	9,264	11,605	4,554	2,327	856	5,510	6,288	2,198	2,426	62,398	1.07%
	Amount	492,462	970,413	1,787,545	1,769,018	3,920,177	664,000	312,125	128,438	612,474	1,060,100	434,503	344,172	12,495,427	0.74%
	Unit Price	162	187	195	191	338	146	134	150	111	169	198	142	200	
Other potted flowers	Quantity	29,432	63,550	83,325	64,359	156,872	46,896	27,661	17,570	38,952	16,683	10,310	10,558	566,168	9.67%
	Amount	8,173,336	15,290,102	18,896,871	12,776,066	61,307,631	10,141,587	6,156,840	4,397,663	10,060,580	4,429,851	2,749,774	3,103,419	157,483,720	9.27%
	Unit Price	278	241	227	199	391	216	223	250	258	266	267	294	278	
Clematis	Quantity	0	573	2,482	1,689	1,931	53	0	12	0	0	68	160	6,968	0.12%
	Amount	0	83,333	1,322,991	881,412	1,331,054	26,110	0	10,680	0	0	21,400	58,848	3,735,828	0.22%
	Unit Price	0	145	533	522	689	493	0	890	0	0	315	368	536	
Cyclamen	Quantity	25,269	2,891	24	0	0	0	0	72	11,055	56,177	96,263	87,567	279,318	4.77%
	Amount	3,874,989	336,211	792	0	0	0	0	11,064	1,607,884	11,292,118	31,817,014	45,137,061	94,077,133	5.54%
	Unit Price	153	116	33	0	0	0	0	154	145	201	331	515	337	
Other bulbous plants	Quantity	18,617	16,059	3,402	585	627	229	41	3	0	97	1,541	6,336	47,537	0.81%
	Amount	3,225,397	2,593,072	497,507	140,286	226,517	51,025	13,376	2,700	0	23,522	236,180	1,347,814	8,357,396	0.49%
	Unit Price	173	161	146	240	361	223	326	900	0	242	153	213	176	
Tulip	Quantity	9,313	8,492	1,188	0	0	0	0	0	0	0	0	705	19,698	0.34%
	Amount	1,874,497	1,533,840	307,105	0	0	0	0	0	0	0	0	121,420	3,836,862	0.23%
	Unit Price	201	181	259	0	0	0	0	0	0	0	0	172	195	
Other liliium	Quantity	472	2,842	2,710	744	724	396	487	0	0	60	139	0	8,574	0.15%
	Amount	63,968	205,008	187,362	43,134	127,102	86,360	72,540	0	0	27,632	45,452	0	858,558	0.05%
	Unit Price	136	72	69	58	176	218	149	0	0	461	327	0	100	
Chrysanthemum	Quantity	980	2,371	1,254	984	1,452	1,059	2,532	6,494	16,977	10,967	1,051	368	46,489	0.79%
	Amount	59,695	111,462	103,935	96,668	141,595	107,236	432,195	1,301,679	4,121,164	3,795,353	206,726	41,920	10,519,628	0.62%
	Unit Price	61	47	83	98	98	101	171	200	243	346	197	114	226	
Primula	Quantity	74,696	48,268	14,946	176	0	0	0	0	5,130	29,721	38,490	60,333	271,760	4.64%
	Amount	5,144,332	3,245,767	1,153,237	16,416	0	0	0	0	351,037	1,787,842	3,284,795	4,135,790	19,119,216	1.13%
	Unit Price	69	67	77	93	0	0	0	0	68	60	85	69	70	
Begonia	Quantity	4,954	4,594	5,534	4,389	9,015	5,561	2,740	1,903	4,547	4,068	3,079	3,748	54,132	0.92%
	Amount	1,430,335	1,296,753	2,400,224	1,280,163	3,054,969	1,214,761	566,649	477,704	2,098,548	1,704,424	997,456	883,057	17,405,043	1.02%
	Unit Price	289	282	434	292	339	218	207	251	462	419	324	236	322	
Poinsettia	Quantity	0	0	0	0	0	0	0	0	56	3,939	31,440	22,221	57,656	0.98%
	Amount	0	0	0	0	0	0	0	0	56,000	1,855,437	13,087,021	8,881,616	23,880,074	1.41%
	Unit Price	0	0	0	0	0	0	0	0	1,000	471	416	400	414	
Root rapping item	Quantity	0	0	0	0	0	0	0	0	0	0	0	0	0	0.00%
	Amount	0	0	0	0	0	0	0	0	0	0	0	0	0	0.00%
	Unit Price	0	0	0	0	0	0	0	0	0	0	0	0	0	
Nursery plants	Quantity	95,906	131,961	209,578	369,349	493,096	353,892	128,366	94,889	199,950	328,222	505,757	256,133	3,167,099	54.07%
	Amount	4,863,384	7,338,758	10,799,563	18,713,861	24,121,986	17,028,459	6,219,931	5,478,920	9,840,194	16,462,040	21,684,038	22,066,707	164,617,841	9.69%
	Unit Price	51	56	52	51	49	48	48	58	49	50	43	86	52	
Potted plant material	Quantity	526	4,796	2,009	3,987	3,530	3,939	2,311	1,771	11,347	13,151	4,911	6,731	59,009	1.01%
	Amount	217,590	940,125	508,647	782,390	761,545	1,139,834	776,861	1,159,655	3,135,570	1,429,794	833,920	685,300	12,371,231	0.73%
	Unit Price	414	196	253	196	216	289	336	655	276	109	170	102	210	
Total	Quantity	319,407	372,139	452,667	560,059	851,455	573,103	252,982	183,886	384,714	582,472	785,012	539,696	5,857,592	100.00%
	Amount	98,136,517	117,661,996	143,947,832	107,714,258	223,894,280	142,968,098	109,869,056	88,458,378	124,673,326	146,272,054	170,131,867	225,479,326	1,699,206,988	100.00%
	Unit Price	307	316	318	192	263	249	434	481	324	251	217	418	290	

As for the shares, these figures have been rounded off to the second decimal and may not add up to 100.

3. Monthly trading volume by item (2) Potted Plants ※ Monthly trading volume of major potted plants

(Units: pot for quantity, yen for amount)

Item	Month	Jan.	Feb.	Mar.	Apr.	May	Jun.	Jul.	Aug.	Sep.	Oct.	Nov.	Dec.	Total	Share
	Orchids	Quantity	13,196	18,963	22,881	11,318	13,457	11,936	10,880	9,828	9,051	11,007	11,959	27,102	171,578
	Amount	52,246,573	60,701,745	70,905,163	33,527,190	46,052,211	56,109,308	59,087,429	53,637,900	57,431,680	67,094,848	69,690,208	107,137,802	733,622,057	43.17%
Foliage plants	Quantity	29,819	44,613	52,950	51,066	80,384	83,733	61,072	43,036	58,006	58,822	44,087	26,829	634,417	10.83%
	Amount	11,610,233	17,063,932	21,991,296	18,384,131	28,936,584	34,460,394	30,890,674	19,095,270	27,572,504	23,448,065	16,170,468	11,380,288	261,003,839	15.36%
Flowering plants	Quantity	92,138	107,783	117,838	103,029	244,218	89,687	42,633	28,082	77,441	98,291	146,089	134,089	1,281,318	21.87%
	Amount	19,217,479	23,364,359	30,732,060	31,431,241	119,659,369	25,765,862	9,872,488	6,604,045	18,916,412	24,189,877	49,595,526	59,919,327	419,268,045	24.67%
Nursery plants	Quantity	95,906	131,961	209,578	369,349	493,096	353,892	128,366	94,889	199,950	328,222	505,757	256,133	3,167,099	54.07%
	Amount	4,863,384	7,338,758	10,799,563	18,713,861	24,121,986	17,028,459	6,219,931	5,478,920	9,840,194	16,462,040	21,684,038	22,066,707	164,617,841	9.69%
Others	Quantity	88,348	68,819	49,420	25,297	20,300	33,855	10,031	8,051	40,266	86,130	77,120	95,543	603,180	10.30%
	Amount	10,198,848	9,193,202	9,519,750	5,657,835	5,124,130	9,604,075	3,798,534	3,642,243	10,912,536	15,077,224	12,991,627	24,975,202	120,695,206	7.10%

As for the shares, these figures have been rounded off to the second decimal and may not add up to 100.

